



LED LINEAR LIGHTS

# LINEAR LED LIGHT LINES



PRODUCT WORLD



## LINEAR LED LIGHT LINES

### Up to 27 linear luminaires in one length = 4.3 amperes with one-sided supply

These shockproof LED linear luminaires with IP65 protection are designed for use in applications such as

- » in underground garages,
- » Operating and workshop facilities,
- » Technical and supply rooms,
- » Corridors and connecting corridors,
- » Wet cells and
- » in the entire indoor AND outdoor area!

Up to 27 LED linear luminaires can be lined up and connected to each other without additional parallel power supply (equipped with two-pole luster terminals inside as standard). The LED linear luminaires can be used for specific application tasks due to a variable alignment of the beam angle (180°), fixable swivel brackets and easy-to-mount wire suspensions.

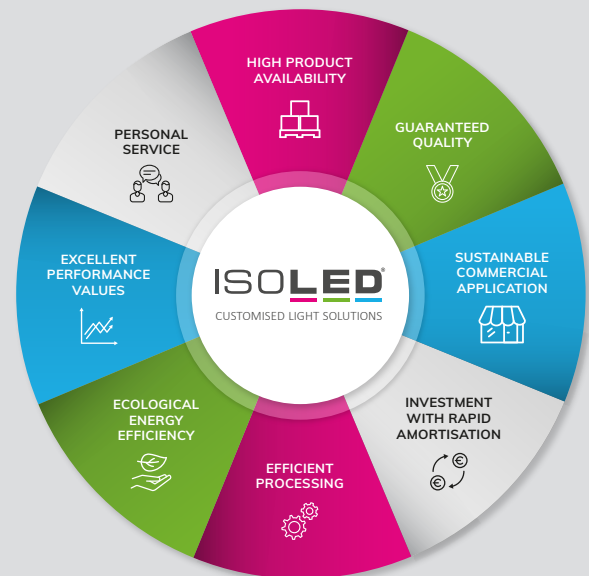
## CUSTOMISED LIGHT SOLUTIONS

SUSTAINABLE EFFICIENCY IMPROVED WITH SMART LED LIGHTING CONCEPTS

ISOLED® offers a standardized LED product range with over 2,200 branded items in

- » best and guaranteed quality,
- » with the greatest possible ecological energy efficiency,
- » with personal service and
- » efficient processing,
- » in a fair price-performance ratio,

with which future-oriented LED lighting solutions as well as intelligent LED lighting concepts with short amortisation times can be realised.



## 99% of our customers and partners recommend ISOLED® !



### Top service and advice

With excellent product quality, personal advice and first-class service, we create clear competitive advantages.



### High product availability

We offer a wide range of more than 2,200 high-quality branded products with immediate availability.

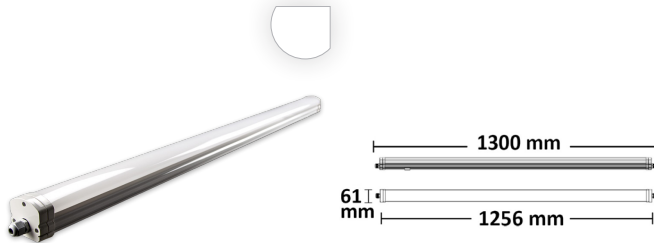


### Delivery 95% on the next working day

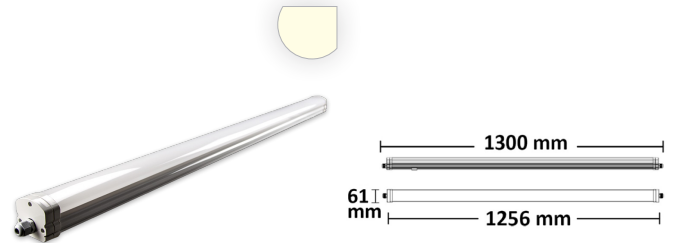
We are usually able to dispatch all orders received by 11am on working days on the same day.



## LINEAR LED LIGHT LINES



**112704** | LED linear luminaire 36W, IP65, neutral white

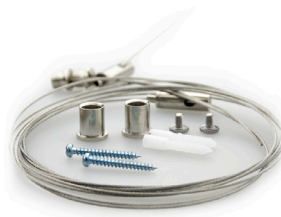


**112705** | LED linear luminaire 36W, IP65, warm white

## ACCESSORIES



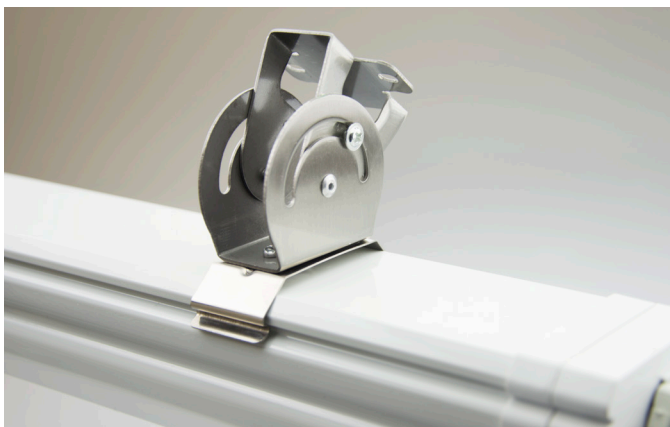
**112706** | Mounting bracket flexible for LED linear luminaire | 2 pcs



**112707** | Cable suspension with ceiling screw connection and counterpart incl. steel cable 2,5m | 2 STK



**114059** | Replacement set of 2 Mounting clips



2-pole, neutral white protection class II linear luminaire incl. stainless steel mounting brackets, through-wired with luster terminal below the end caps screwed on both sides with strangle nipple and sealing plug



# YOUR PARTNER

ISOLED® SINCE 2008



## ISOLED® AUSTRIA

FIAI Handels GmbH  
Egerbach 48  
A-6334 SCHWOICH  
AUSTRIA

Tel: +43 5372 219 999

Email: [office@isoled.at](mailto:office@isoled.at)  
[www.isoled.at](http://www.isoled.at)



## ISOLED® GERMANY

FIAI Trading GmbH  
Hollerweg 3  
D-85649 BRUNNTHAL  
GERMANY

Tel: +49 228 30 43 89 85

Email: [office@isoled.at](mailto:office@isoled.at)  
[www.isoled.de](http://www.isoled.de)



## ISOLED® SWITZER- LAND

Allegra Swiss GmbH  
Einsiedlerstrasse 15a  
CH-8834 SCHINDELLEGI  
SWITZERLAND

Tel: +41 44 787 04 75

Email: [info@isoled.ch](mailto:info@isoled.ch)  
[www.isoled.ch](http://www.isoled.ch)



## ISOLED® HUNGARIA

ISOLED® HUNGARIA  
Kft.  
Hunyadi utca 18  
H-8997 Zalaháshággy  
HUNGARY

Tel: +36 20 256 1339

Email: [info@isoled.hu](mailto:info@isoled.hu)  
[www.isoled.hu](http://www.isoled.hu)