



# ISOLED REFERENCES

## Brückengützl Aktivstall

OUR CUSTOMER = OUR PARTNER

Brückengützl  
AKTIVSTALL

**ISOLED**<sup>®</sup>

CUSTOMISED LIGHT SOLUTIONS





REFERENCES

**ISOLED**<sup>®</sup>

CUSTOMISED LIGHT SOLUTIONS



SOURCE: Herbert Koffou Professional Photography



SOURCE: Herbert Koffou Professional Photography





## REFERENCES

# ISOLED®

CUSTOMISED LIGHT SOLUTIONS



## Brückengützl AKTIVSTALL

Martin Fankhauser and his family rely on the efficient LED technology of ISOLED® in their active stable Brückengützl in Kirchdorf/Tyrol (A), newly built in 2017.

For the sake of the animal and the environment- a lighting concept tailored to the equestrian sport guarantees

- » a safe riding operation,
- » protects the animals from unnecessary light pollution and irritation both at dusk and at night and
- » offers perfect conditions for enthusiastic riders to practice their passion.

In addition to excellent lighting quality, sustainable energy cost savings and, in particular, ecological considerations were key factors in the decision to implement an LED-based lighting concept at the new site.

We are pleased and thank the Fankhauser family for the trust they have placed in us!





## REFERENCES

# ISOLED®

CUSTOMISED LIGHT SOLUTIONS

## 10 YEARS OF PROFESSIONAL LED SOLUTIONS

Our company consists of professionally competent lateral thinkers and motivated movers and shakers who drive the technical progress in LED technology and work with innovative ideas and solutions set new accents and trends.

For 10 years we have been offering our customers and partners a standardized LED product range with well over 1,000 articles, intelligent LED project lighting solutions as well as a customer-specific production of sustainable LED lighting solutions according to individual specifications.

In the design of our wide range of products and services range of services we orientate ourselves both to the

- » requirements of our customers as well as the
- » technical progress of LED technology.

Excellent quality, high advisory skills of our employees and sustainable growth of our company. Our partners are assured of reliable coverage of their requirements with the latest LED lighting components and systems.



## YOUR COMPLETE LED SUPPLIER - WE OFFER YOU:

- » 10 years of experience, specialization in LED and a wide range of products
- » Personal, competent consulting service with high availability (also on site)
- » Professional, fast and reliable
- » Order processing
- » Customized packaging
- » Extended warranty (min. 24 months warranty)
- » High and sustainable product availability
- » Guarantee of a fast spare parts supply
- » Rapidly acting after-sales service and unbureaucratic returns management
- » Appropriate company size and sustainable company development for a long-term cooperation based on partnership
- » Short delivery times







REFERENCES

**ISOLED®**

CUSTOMISED LIGHT SOLUTIONS

## LED LIGHTING SOLUTION FROM ISOLED® FOR RIDING HALLS

### MORE SAFETY AND PERFORMANCE FOR RIDER AND HORSE

The correct lighting in riding and lunging arenas is of enormous importance, especially since the safety and health of people and animals is at stake. Especially in the twilight and evening hours, it is essential to offer a lighting solution that is tailored to the existing architecture and equestrian sport to the riders and horses.

Normally, illuminance of 200 to 500 lux is recommended for equestrian operations - depending on the type of sport practised in the hall (e.g. for show-jumping an average of around 300 lux). For championships, there are association-specific requirements which need to be taken into account.



SOURCE: ISOLED®







## LED HALLS - LINEAR LIGHTS FROM ISOLED®

Uniform, flicker-free lighting with high Energy and cost efficiency

### Linear lightbars

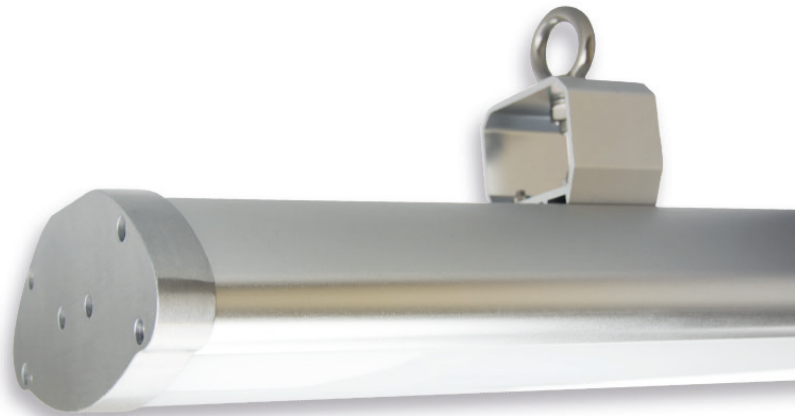
The high-bay linear luminaires are equipped with a diffuse (frosted) polycarbonate cover (shock and impact resistant), which combines the individual integrated LED chips to form a homogeneous, linear light bar. This means that no light points are visible!

### No flickering

Furthermore, LED high-bay linear luminaires from ISOLED® are absolutely FLICKERFREE (especially animals react very sensitively to the flickering of lights, become restless and feel stressed out).

### More performance and safety

The neutral white light (4,200 K) with the colour rendering index of CRI>84 has both a vitalising and activating effect on humans and animals, promotes performance and contributes significantly to safety.

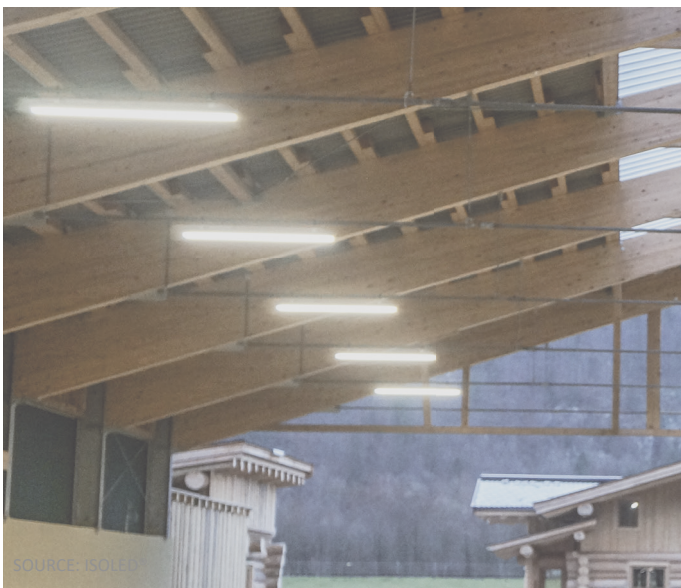


LED HALL-LINEAR LUMINAIRE

150CM | 200W | NEUTRAL WHITE | IP65 | 1-10V DIMMABLE

SIMPLE, FAST ASSEMBLY/INSTALLATION HORIZONTALLY  
ADJUSTABLE RING SUSPENSION

**ITEM NO. 112732**



SOURCE: ISOLED®



SYS-ONE RADIO RECEIVER

PUSH-DIMMER | 0-10V OUTPUT | 230V

**ITEM NO. 112711**

### Adjust brightness

The LED high bay linear luminaires are dimmable 1-10 V CD. The brightness can be controlled with the SYS-ONE radio receiver/push dimmer shown here.







## REFERENCES

# ISOLED®

CUSTOMISED LIGHT SOLUTIONS

## AVOID RIDING ACCIDENTS - NO LIGHT/SHADOW CHANGE

Lighting concepts with LED high-bay linear luminaires installed in accordance with the light calculation and planning create an even, full-area and ideal light distribution throughout the entire riding hall. In addition, the diffuse enclosure of the high-bay linear luminaire reduces glare.

Horses are very sensitive and can break out, stop suddenly or make erratic movements when light/shadow changes. Twilight vision in horses is very pronounced.



SOURCE: ISOLED®

### LED HIGHBAY LUMINAIRES LINEAR - YOUR ADDED VALUE AT A GLANCE!



Reliable 200 Watt rated power due to high-end LED chips



Strong, sustainable light output of 25,000 lumens (4,200 Kelvin/neutral white)



High quality LED high bay linear luminaire with extremely robust aluminium housing



Diffuse, glare-reducing polycarbonate cover | shock and impact resistant



Compact design with protection class IP65



5 YEARS GUARANTEE



Balanced thermal management for long service life (50,000 operating hours)



1- 10 V DC dimmable (control signal or potentiometer)



Including external branded transformer from Meanwell with 20 cm long 3-pole supply line



Ambient temperature from -30° to +60



Simple, fast assembly/installation | horizontally adjustable ring suspension



FLICKERFREE







## REFERENCES

# ISOLED®

CUSTOMISED LIGHT SOLUTIONS

## UP TO 1000 WATT TOTAL CONNECTED LOAD

LED linear lights (class II) with 36 watts provide pleasantly bright lighting for outdoor use (luminous flux is 3,760 lumen/4,000 Kelvin neutral white). The housing is made of PVC, the design corresponds to protection class IP65.



### Speciality

Can be extended as required! These linear lights can be connected up to a total connected load of 1,000 W can be strung together.

SOURCE: ISOLED®



LED LINEAR LIGHT

36 W | IP65 | NEUTRAL WHITE

ITEM NO. 112704

## LED LINEAR LIGHTS - SUSTAINABLE ENERGY EFFICIENCY WITH TOP LIGHTING QUALITY!



Sustainable light output of 3,760 lumens | 105 lumens/watt



Color temperature of 4,000 Kelvin | Color rendering index is CRI>85



Class II luminaire - no connection to PE required



Protection class IP65



Luminaires can be installed side by side up to a total of 1,000 W



High quality construction with high impact resistance (IK08)



Optimal thermal management for long service life (30,000 operating hours)



Simple and fast assembly



Accessories for ceiling/wall mounting included



Adjustable swivel brackets and cable suspension set optionally available

**FLICKER FREE**

FLICKERFREE

